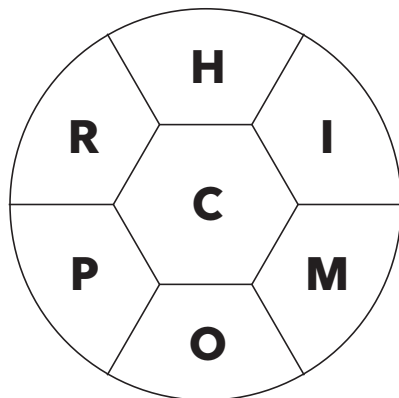


SPELLING BEE

By Frank Longo

How many common words of 5 or more letters can you spell using the letters in the hive? Every answer must use the center letter at least once. Letters may be reused in a word. At least one word will use all 7 letters. Proper names and hyphenated words are not allowed. Score 1 point for each answer, and 3 points for a word that uses all 7 letters.

Rating: 8 = good; 13 = excellent; 18 = genius



Our list of words, worth 22 points, appears with last week's answers.

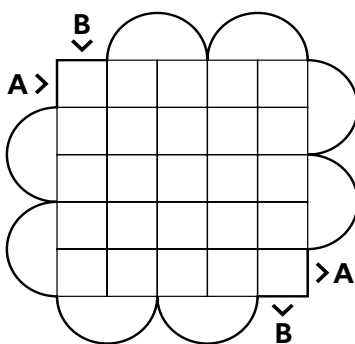
SWITCHBACKS

By Patrick Berry

Answers in this grid proceed in two long, winding paths. Path A starts in the upper-left corner and winds left and right, taking hairpin turns at the curved ends. Path B starts in the same place but winds up and down. Each path contains a series of answers placed end to end, one letter per space, clued in order of appearance.

Path A Overly talkative • Expenditure • Farms that produce cheese and milk • Have a bee in one's ____

Path B A great many (2 wds.) • "Full" or "half" wrestling move • More charmingly old-fashioned • "I agree completely!" (3 wds.)

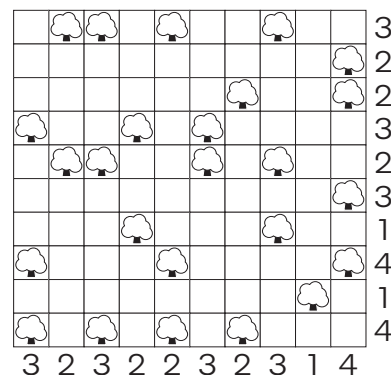
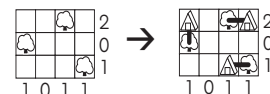


TENTS

By Wei-Hwa Huang

Place a tent next to each tree in the grid. Each tree has one tent connected to it. A tent must be adjacent horizontally or vertically to the tree. No two tents can touch horizontally, vertically or diagonally. The numbers beside the grid specify how many tents appear in their respective rows and columns.

Ex.



MARCHING BANDS

By Brendan Emmett Quigley

The words in this puzzle march around the grid in two ways. In one formation ("Rows"), words march across — two words for each numbered line, reading consecutively from left to right. The dividing point between these answers is for you to determine, except in row 7, where the words are separated by a black square. In the second formation ("Bands"), words march around each of the six shaded and unshaded bands, starting at the lettered squares (A, B, C, D, E and F) and proceeding in a clockwise direction, one word after another. For example, Band A will consist of seven consecutive answers (a through g) starting in square A and reading around the perimeter of the grid. Again, the dividing point between these answers is for you to determine. All clues are given in order. When the puzzle is completed, each square in the grid will have been used once in a Row word and once in a Band word.

ROWS

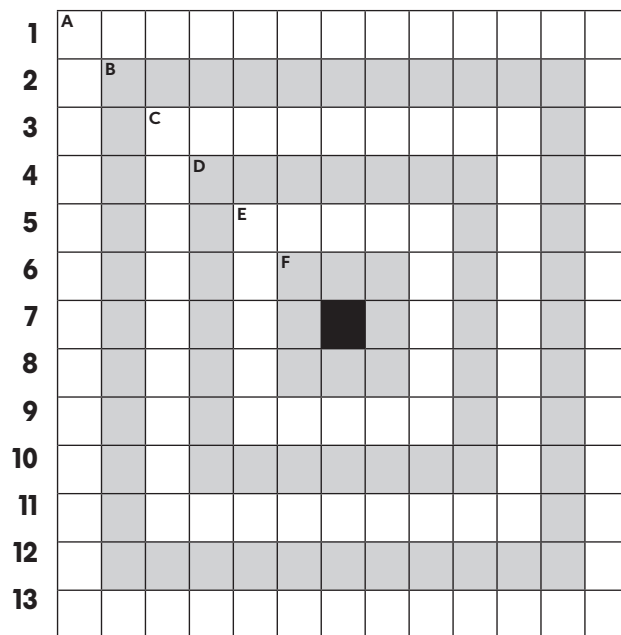
- 1 **a** Los Angeles neighborhood where rap's N.W.A. was formed
- b** Chefs' chapeaux
- 2 **a** Money-____ (cheap sort)
- b** One holding up a stagecoach
- 3 **a** Chorus voices
- b** Fried seafood appetizer
- 4 **a** Gyro meat
- b** English home for Jumbo the elephant (2 wds.)
- 5 **a** Bachelorette party accessory
- b** Best Actor of 2003 and 2008 (2 wds.)
- 6 **a** Triage pro (2 wds.)
- b** Kind of board whose name means "yes yes"
- 7 **a** Solidified
- b** Activate (2 wds.)

BANDS

- 8 **a** Conversation
- b** Like many an internship
- 9 **a** Noisy celebration
- b** Designer Karan
- 10 **a** Maker of jet-propelled pogo sticks and building disintegrators
- b** Like some coordinates, named after mathematician René
- 11 **a** Roving reporter's opening (2 wds.)
- b** Pushes (down)
- 12 **a** Submerged traps (2 wds.)
- b** Have in one's Twitter feed, say
- 13 **a** Most cutting, as comments
- b** Paul who went on a "midnight ride"

BANDS

- A **a** Put on the "free" list
- b** The Lone Ranger's sidekick
- c** Press conference format (3 wds.)
- d** Only seven-time female French Open winner
- e** Fixed charge (2 wds.)
- f** Summer buzzer
- g** Transoceanic traveler's problem (2 wds.)
- B **a** Stretchy fastener (2 wds.)
- b** Golf club
- c** Enlist
- d** To whom Hermes gave the lyre
- e** Camera setting (hyph.)
- f** Sucking worm
- g** Like some photographs



- C **a** Title opera character who jumps to her death
- b** Childbirth relaxation method
- c** Lifeless
- d** More mean
- e** Water stopper near a factory
- D **a** Fair-haired boy
- b** Intentionally (2 wds.)

- c** Go over the line?
- d** Bravery
- E **a** On a cruise, say
- b** Name for something
- c** ____ Xing
- d** With: Fr.
- F **a** Very strained, as an interpretation